

## *Blueberry Crocheted Necklace*

### MATERIALS NEEDED:

Lightweight metallic thread  
34 gauge wire (small spool)  
4mm round faceted light blue firepolish (60 beads)  
4mm round montana blue glass beads (94 beads)  
8mm round pale blue glass beads (34 beads)  
6° Czech #78102 silver lined crystal seed beads (50 beads)  
Silver plated foldover ends (2)  
Silver plated clasp (1)  
Silver-plated split ring, 5mm (2)  
Size 10 steel crochet hook recommended  
Epoxy or E6000 glue  
Pliers needed for closing foldover ends.

This necklace is created by combining eight strands of crochet (two each of four different patterns). Each strand is worked with two plies—one of wire and one of metallic thread. Beads are threaded onto the wire only, not onto the metallic fiber. Beads are crocheted at specific intervals in each pattern. The eight strands are tied together at both ends using the thread/wire tails, then foldover ends and clasp are added.



### GENERAL DIRECTIONS FOR THIS NECKLACE

At the beginning of each strand, pull out about 3 feet of wire and secure it in the slot on the spool so the rest of the wire stays on the spool. This is how you will begin each of the eight strands in this necklace. You will always be crocheting with two plies, one of wire and one of metallic thread. At the start and end of each strand, leave a tail of about 6" which will later be used in finishing. The gauge of your chain stitch should be about 8-9 chains per inch. Follow the threading and stitching directions for the strands as described on the following page. BEADS ARE THREADED ONTO THE WIRE ONLY.

NOTE: On all the strand patterns, it's more important that the finished strands be the same length than that they contain the same number of stitches. Make minor adjustments at the end of each strand by adding more chains only if necessary. The strands will intertwine in the necklace, so you won't notice individual strands as much as you would notice a strand that was too long or too short in comparison to the others. Use the same strand as a measure of the correct length as you work each new strand.



**Strand 1** (Make two) Thread all the 4mm round montana blue onto the wire. Combine the wire and the metallic thread together and make a slip knot on the hook, leaving a 6" starting tail. Chain 10 to start, then chain 1 with a bead. \*Chain 2 without beads, then chain 1 with bead.\* Repeat between \* until there are a total of 47 beads chained into the strand. End with ten unbeaded chains. Cut the thread and wire, and pull the thread/wire through the last chain loop to secure. Leave a 6" tail on this strand. The second strand should be as nearly identical to the first as possible; adjust the number of chains at the end if needed so the strands are the same length.



**Strand 2** (Make two) Thread all the 8mm round pale blue onto the wire. Combine the wire and the metallic thread together and make a slip knot on the hook, leaving a tail of about 6". Chain 10 with the combined thread and wire, then chain 1 with a bead. \*Chain 6 without beads, then chain 1 with bead.\* Repeat between \* until there are 17 beads chained into the strand. End with ten unbeaded chains. Cut the thread and wire, and pull the thread/wire through the last chain loop to secure. Leave a 6" tail on this strand. The second strand should be as nearly identical to the first as possible; adjust the number of chains at the end if needed so the strands are the same length.



**Strand 3** (Make two) Thread all the 4mm faceted light blue onto the wire. Combine the wire and the metallic thread together and make a slip knot on the hook, leaving a tail of about 6". Chain 12 with the combined thread and wire, then chain 1 with THREE beads. \*Chain 12 without beads, then chain 1 with THREE beads.\* Repeat between \* until there are 10 three-bead clusters chained into the strand. End with 12 unbeaded chains. Cut the thread and wire, and pull the thread/wire through the last chain loop to secure. Leave a 6" tail on this strand. The second strand should be as nearly identical to the first as possible; adjust the number of chains at the end if needed so the strands are the same length.



**Strand 4** (Make two) Thread all the 6° silver-lined crystal seed beads onto the wire. Combine the wire and the metallic thread together and make a slip knot on the hook. Chain 12 with the combined thread and wire, then chain 1 with a bead. \*Chain 4 without beads, then chain 1 with a bead.\* Repeat between \* until there are 25 6° seed beads chained into the strand. End with 12 unbeaded chains. Cut the thread and wire, and pull the thread/wire through the last chain loop to secure. Leave a 6" tail on this strand. The second strand should be as nearly identical to the first as possible; adjust the number of chains at the end if needed so the strands are the same length.

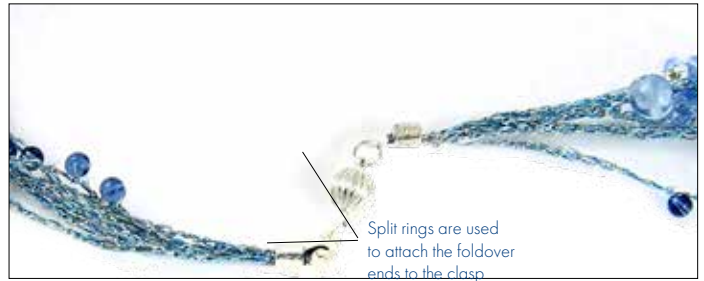
## FINISHING



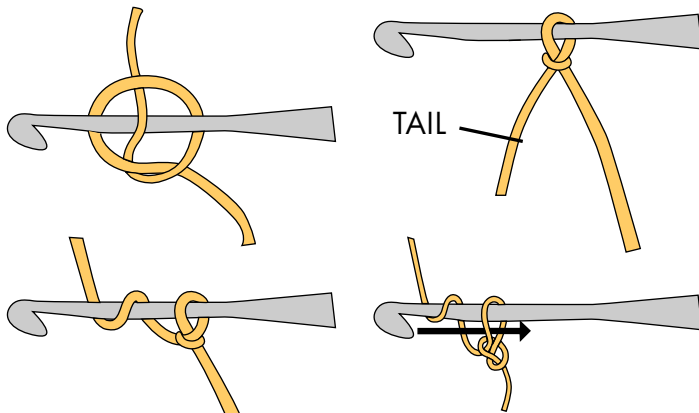
Lay all the strands out on a flat surface. Adjust them so the ends of the chains line up as much as possible; the lengths probably won't be exactly the same. Tie a simple knot using all the threads. The knot should land close to the end of the chains, but if necessary, some of the chain itself can be tied into the knot. When you're happy with the arrangement of the strands, tighten the knot.



Enlarge the opening on the foldover ends if needed so the knot slips into the opening; use pliers, but try not to scratch the surface of the foldover ends. Remove the knot and trim the excess very close to the knot. Handle the end carefully so the knot does not come open. Mix the epoxy, and fill the foldover end with epoxy. Lay the knot into the opening and allow the epoxy to set until viscous; use pliers to close the foldover end. Wipe any excess epoxy from the pliers with a disposable cloth or towel before it sets. When the epoxy is fully set, attach the clasp to the foldover ends with split rings on both sides.



## BASIC CROCHET CHAIN STITCH



Start by making a slip knot at the end of your thread. Refer to the general directions for the required length of the thread tail. Wrap the thread around the hook from back to front, then pull a loop through the original knot to create the chain. A new loop will result. Keep pulling the wrapped thread through each new loop to form a continuous chain.

To add a bead to a chain, bring the bead all the way down the wire/thread so it is close to the hook. Capture the bead within the chain when you pull the thread through the loop.



To end a chain, simply cut the thread to the required length and pull it through the last loop. Leave a 6" tail which will be used later in sizing and finishing.